

# HP-Flansch, PN 10 gebohrt

- voll druckbelastbar
- extralanges Schweißende bis DN 200 und langes Schweißende ab DN 250, für E-Muffen-Schweißung geeignet
- Auswahlmöglichkeiten:
  - Flanschring A: kunststoffbeschichteter Stahl
  - Flanschring B: hochfester Kunststoff

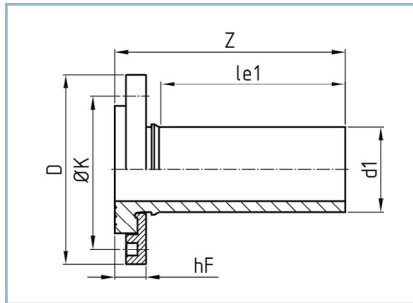
optional: Edelstahl-Losflansch, PN 10, 16 oder 25 gebohrt

# HP flange, PN 10 drilled

- in conformity with pressure class
- extra long welding end up to DN 200 and long welding end from DN 250, for the use of electrofusion sockets
- Selection options:
  - Backing ring A: steel plastic coated
  - Backing ring B: high-strength plastic

optional: stainless steel backing rings, PN 10, 16 or 25 drilled

VBHP - 2019 #1



Flansch/flange: DIN EN 1092-1, PN 10  
 DVGW (bis/up to DN 200): DV-4508BO0259  
 Toleranzen/tolerance (S./p. 11): Z, l<sub>e1</sub> --> Tab./tab. 1 (ab/from DN 250)  
 Patentiert/Patented

|     |      |    |    |    |      |    |      |    |   |     |   |     |
|-----|------|----|----|----|------|----|------|----|---|-----|---|-----|
| SDR | ≥ 41 | 33 | 26 | 21 | 17,6 | 17 | 13,6 | 11 | 9 | 7,4 | 6 | ≤ 5 |
|-----|------|----|----|----|------|----|------|----|---|-----|---|-----|

| DN   | d <sub>1</sub> | l <sub>e1</sub> | ØK   | n x ØL | Schrauben Bolts | D    | Z      |        | Flanschring A Backing ring A |        |                        |        | Flanschring B Backing ring B          |        |
|------|----------------|-----------------|------|--------|-----------------|------|--------|--------|------------------------------|--------|------------------------|--------|---------------------------------------|--------|
|      |                |                 |      |        |                 |      | SDR 17 | SDR 11 | h <sub>F</sub>               |        | Gewicht / weight in kg |        | h <sub>F</sub> Gewicht / weight in kg |        |
|      |                |                 |      |        |                 |      |        |        | SDR 17                       | SDR 11 | SDR 17                 | SDR 11 | SDR 17/11                             | SDR 11 |
| 50   | 63             | 123             | 125  | 4x18   | M 16            | 165  | 160    | 160    | 28                           | 28     |                        | 2,2    | 36                                    | 0,6    |
| 65   | 75             | 130             | 145  | 8x18   | M 16            | 185  | 170    | 170    | 29                           | 29     |                        | 2,5    | 37                                    | 0,9    |
| 80   | 90             | 141             | 160  | 8x18   | M 16            | 200  | 180    | 180    | 29                           | 29     |                        | 3,1    | 40                                    | 1,2    |
| 100  | 110            | 160             | 180  | 8x18   | M 16            | 220  | 200    | 200    | 31                           | 31     |                        | 3,8    | 43                                    | 1,6    |
| 100  | 125            | 173             | 180  | 8x18   | M 16            | 220  | 220    | 220    | 38                           | 38     |                        | 3,9    | 51                                    | 1,9    |
| 125  | 140            | 195             | 210  | 8x18   | M 16            | 250  | 240    | 240    | 40                           | 40     |                        | 5,3    | 53                                    | 2,6    |
| 150  | 160            | 210             | 240  | 8x22   | M 20            | 285  | 260    | 260    | 42                           | 42     |                        | 7,2    | 57                                    | 3,7    |
| 150  | 180            | 215             | 240  | 8x22   | M 20            | 285  | 270    | 270    | 47                           | 47     |                        | 7,2    | 63                                    | 4,1    |
| 200  | 200            | 232             | 295  | 8x22   | M 20            | 340  | 290    | 290    | 50                           | 50     |                        | 12,5   | 65                                    | 6,1    |
| 200  | 225            | 250             | 295  | 8x22   | M 20            | 340  | 310    | 310    | 50                           | 50     |                        | 11,3   | 65                                    | 6,6    |
| 250  | 250            | 200             | 350  | 12x22  | M 20            | 395  | 260    | 270    | 45                           | 55     | 14,4                   | 16,3   | 72                                    | 9,1    |
| 250  | 280            | 200             | 350  | 12x22  | M 20            | 395  | 260    | 270    | 45                           | 55     | 13,2                   | 15,4   | 72                                    | 9,4    |
| 300  | 315            | 200             | 400  | 12x22  | M 20            | 445  | 270    | 280    | 45                           | 55     | 17,6                   | 20,3   | 77                                    | 12,4   |
| 350  | 355            | 200             | 460  | 16x22  | M 20            | 505  | 270    | 280    | 51                           | 61     | 25,2                   | 29,5   | 86                                    | 18,2   |
| 400  | 400            | 300             | 515  | 16x26  | M 24            | 565  | 380    | 390    | 57                           | 70     | 36,7                   | 43,4   |                                       |        |
| 450  | 450            | 300             | 565  | 20x26  | M 24            | 615  | 390    | 410    | 71                           | 85     | 44,2                   | 53,1   |                                       |        |
| 500  | 450            | 300             | 620  | 20x26  | M 24            | 670  | 400    | 410    | 73                           | 87     | 57,3                   | 66,7   |                                       |        |
| 500  | 500            | 300             | 620  | 20x26  | M 24            | 670  | 400    | 410    | 71                           | 85     | 51,3                   | 62,0   |                                       |        |
| 600  | 560            | 300             | 725  | 20x30  | M 27            | 780  | 410    | 420    | 86                           | 96     | 91                     | 105,0  |                                       |        |
| 600  | 630            | 300             | 725  | 20x30  | M 27            | 780  | 410    | 420    | 77                           | 87     | 72                     | 88,0   |                                       |        |
| 700  | 710            | 500             | 840  | 24x30  | M 27            | 895  | 610    | 630    | 81                           | 101    | 123                    | 153,0  |                                       |        |
| 800  | 800            | 500             | 950  | 24x33  | M 30            | 1015 | 615    | 655    | 87                           | 115    | 171                    | 214,0  |                                       |        |
| 900  | 900            | 500             | 1050 | 28x33  | M 30            | 1115 | 630    | 670    | 95                           | 130    | 215                    | 274,0  |                                       |        |
| 1000 | 1000           | 500             | 1160 | 28x36  | M 33            | 1230 | 650    | 690    | 112                          | 152    | 283                    | 358,0  |                                       |        |
| 1200 | 1200           | 500             | 1380 | 32x39  | M 36            | 1455 | 700    | 740    | 150                          | 190    | 463                    | 572,0  |                                       |        |

Finden Sie hier mehr Informationen zu unerem hochfestem Flansch: [reinert-ritz.de/service/RR-ME.pdf](http://reinert-ritz.de/service/RR-ME.pdf)  
 Find herer more informations to our high-strength Flange here: [reinert-ritz.de/service/RR-ME.pdf](http://reinert-ritz.de/service/RR-ME.pdf)

